



www.helenarubinstein.com



Re-PLASTY PRESCRIPTION

— THE 1ST MADE-TO-MEASURE COSMETIC INTERVENTION —
"PERFECT BEAUTIFUL SKIN"



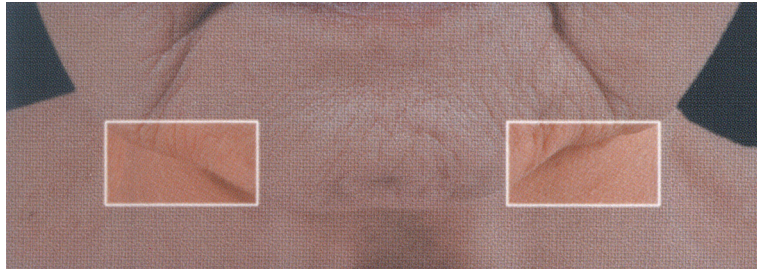
CLINICAL DIAGNOSIS GUIDE
Asian version
INTERNAL USE ONLY



Re-PL
PRESCF

SUBST

LOSS OF PI



DEFINITION

Sagging of the lower part of the face due to the gravity.
It causes a deformation of the face's original oval shape.

AREA

Lower part of the cheek on both sides of the chin.

EVALUATION

- ➔ Evaluate the sagging severity of the lower part of the face on each side of the chin.
- ➔ Do not take into account the double chin if it exists.

LASTY RIPTION

TANCE



LUMPNESS

1

Low



2

Medium



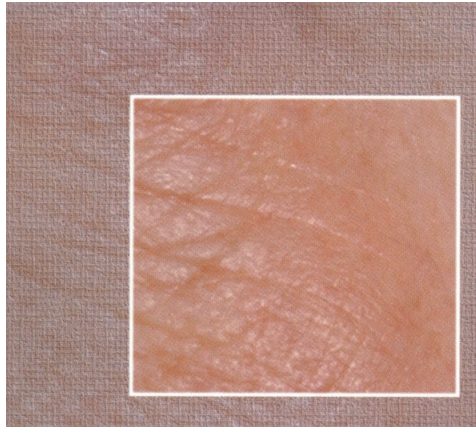
3

High



Pictures and explanations extracted from SKIN AGEING ATLAS Volume 2 Asian Type (p.66-67), L'Oreal Research.

WRINION SPOTS



DEFINITION

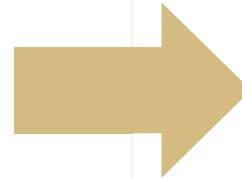
It is about folds originating at the edge of the eye orbit, found at the malar zone, below crow's feet, eye orbit excepted.

AREA

Bounded above by the edge of the eye orbit, stretch laterally and downward on the malar zone.

EVALUATION

- ➔ Evaluate the depth of the deepest wrinkle.
- ➔ Do not take into account wrinkles, fine wrinkles and folds in the inferior.
- ➔ Do not take into account the number of wrinkles.
- ➔ Do not take into account the length of wrinkles.
- ➔ Do not take into account scars.



1
Few



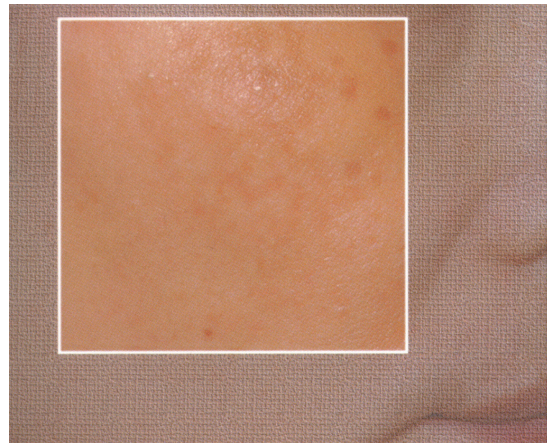
2
Medium



3
A lot



PIGMENTATION



DEFINITION

Pigmentary spots of relatively big size presenting at the area of cheek bone

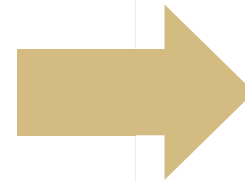
AREA

Malar zone.

EVALUATION

➔ Evaluate the gravity of the spots according to the following order:

- > Number.
- > Contrast.
- > Size.



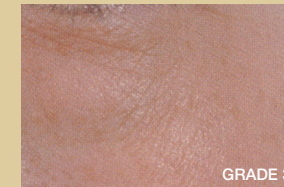
1

Smooth skin/
fine lines



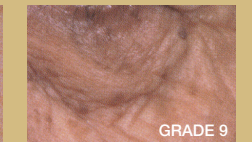
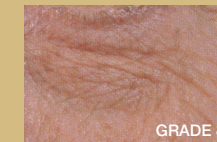
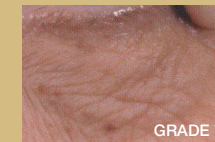
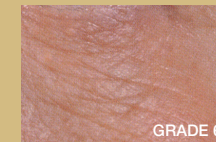
2

Medium



3

Deep
wrinkles



TEXTURE

DILATED PORES



DEFINITION

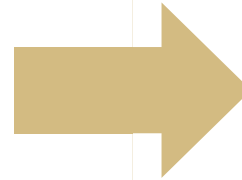
Sebaceous pores on the cheek.

AREA

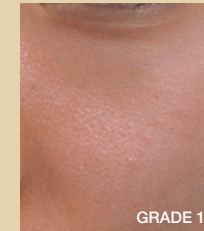
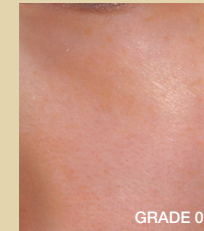
On the cheek, area delimited by the nasolabial fold and the orbit's fold.

EVALUATION

- ➔ Evaluate the size of the pores by scoring the average size of the 10 biggest pores.
- ➔ Do not take into account the number of pores.
- ➔ Do not take into account the pores inside the wrinkles.



1
Few



2
Medium



3
A lot

